

# HONDA

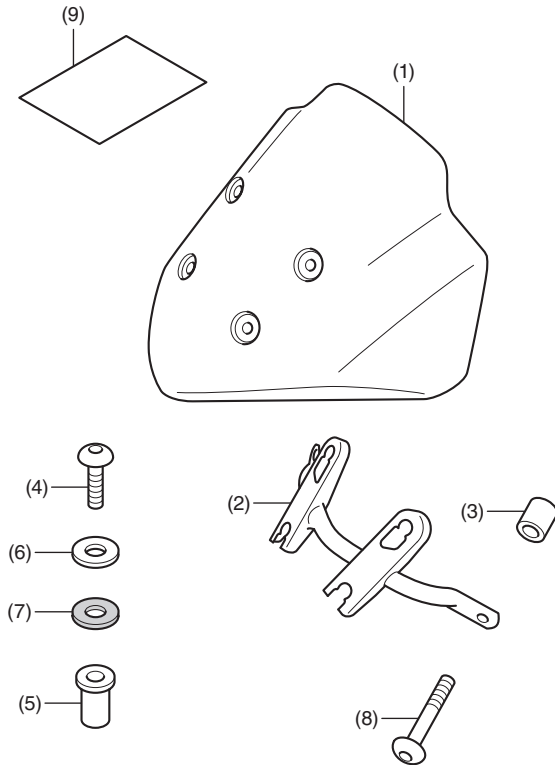
## INSTALLATION INSTRUCTIONS

Accessory  
**METER VISOR**  
P/N 08R70-MJE-D40

Application  
**CB650F/FA**

Publication No.  
**MII**  
Issue Date  
**February 2014**

### PARTS LIST



No.	Description	Qty
(1)	Meter visor	1
(2)	Stay	1
(3)	Collar	2
(4)	5 mm socket bolt	4
(5)	Well nut	4
(6)	Washer	4
(7)	Nylon washer	4
(8)	6 mm socket bolt	2
(9)	URL paper	1

### TOOLS REQUIRED

Hex wrench (5 mm)  
Electric drill  
Drill bit (5 and 12 mm)  
Torque wrench

### TORQUE CHART

Tighten all screws, bolts, and nuts to their specified torque values. Refer to the Service Manual for the torque values of the removed parts.

Item	N-m	kgf-m	lbf-ft
5 mm socket bolt	1.5	0.15	1.1
6 mm socket bolt	10	1.0	7

### INSTALLATION

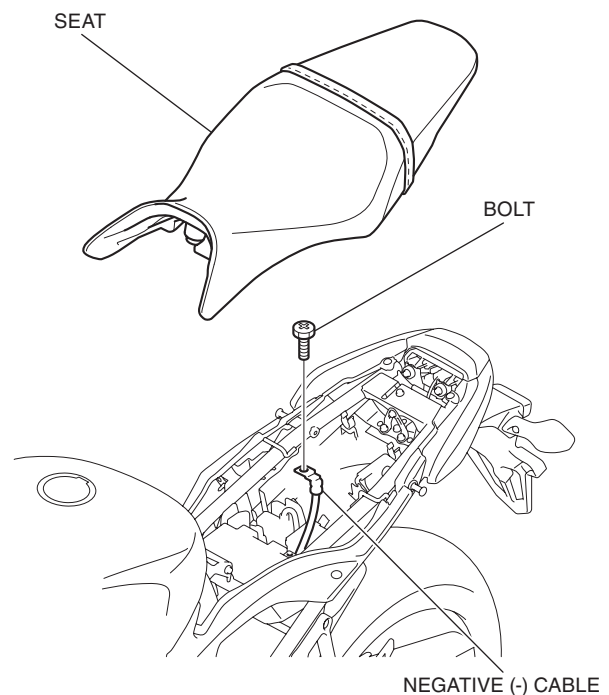
#### ▲ CAUTION

- To prevent burns, allow the engine, exhaust system, radiator, etc., to cool before installing the accessory.

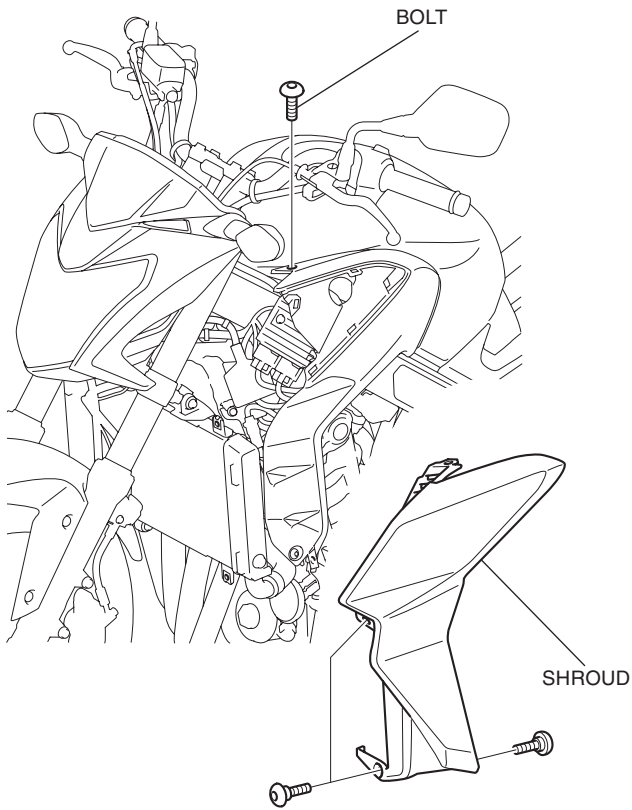
#### NOTE:

- Take care not to damage the painted surfaces of the motorcycle.
- Reinstall the removed parts on the motorcycle and make sure that wires and harnesses are not pinched.
- Disconnect the negative (-) cable from the battery before installing this accessory.
- The memory of the clock will be erased when you disconnect the battery. After reconnecting the battery, refer to the motorcycle Owner's Manual and reset the clock.

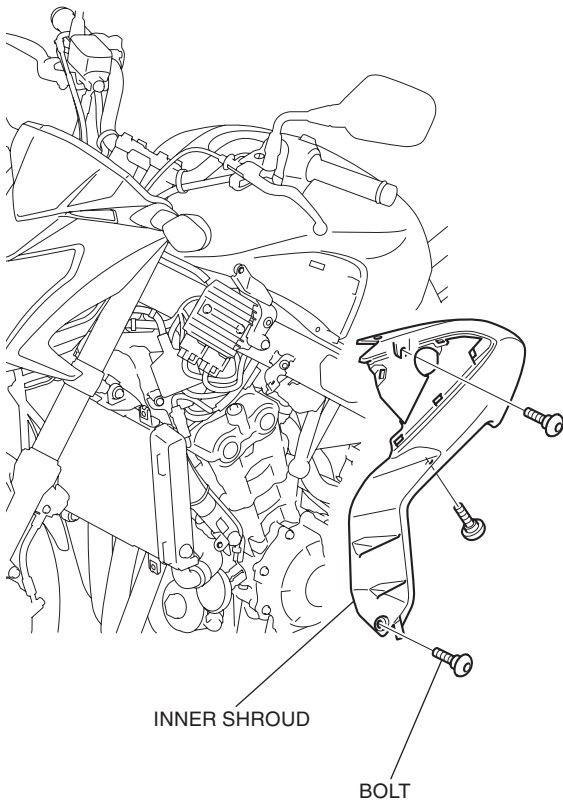
- Refer to the Service Manual for the motorcycle, remove the motorcycle parts, and disconnect the negative (-) cable from the battery.



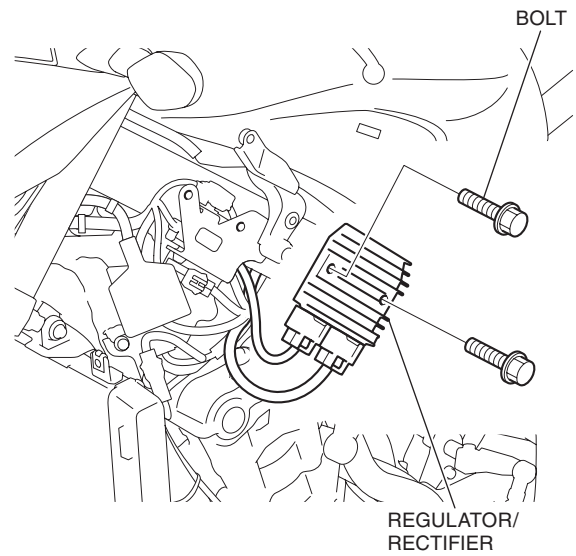
2. Refer to the Service Manual for the motorcycle, remove the motorcycle parts.



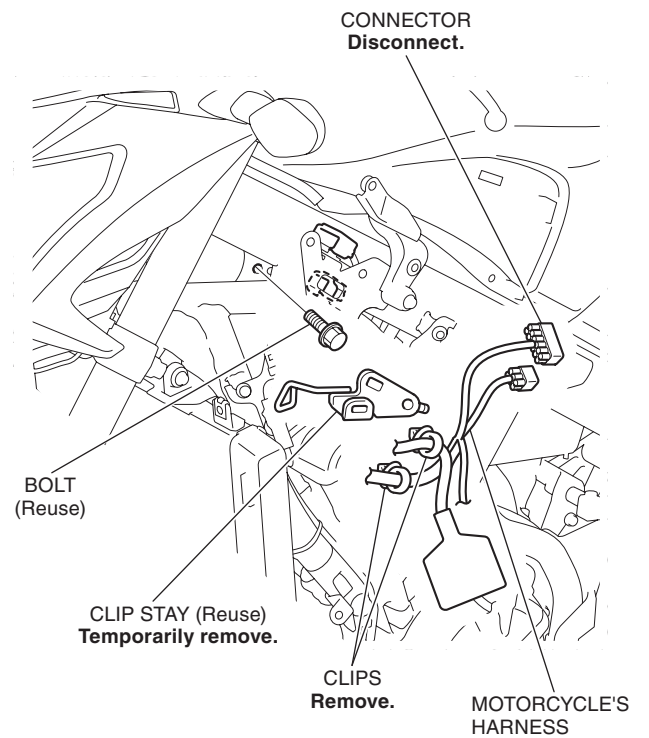
3. Refer to the Service Manual for the motorcycle, remove the motorcycle parts.



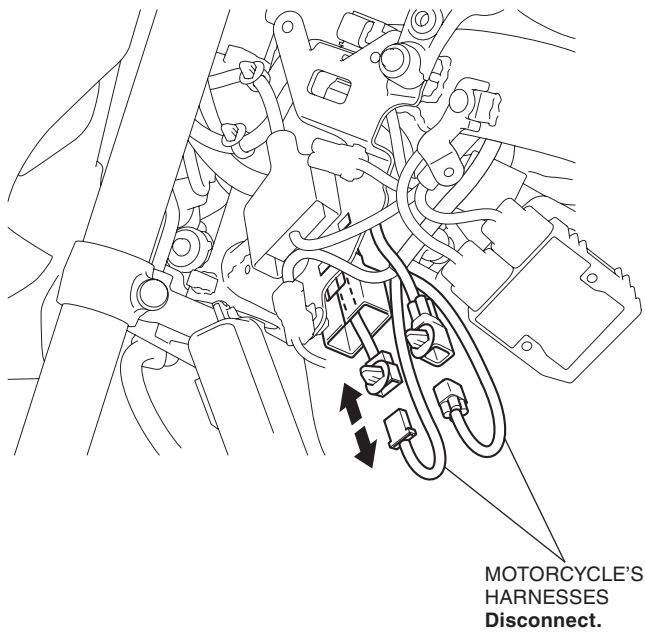
4. Refer to the Service Manual for the motorcycle, remove the motorcycle parts.



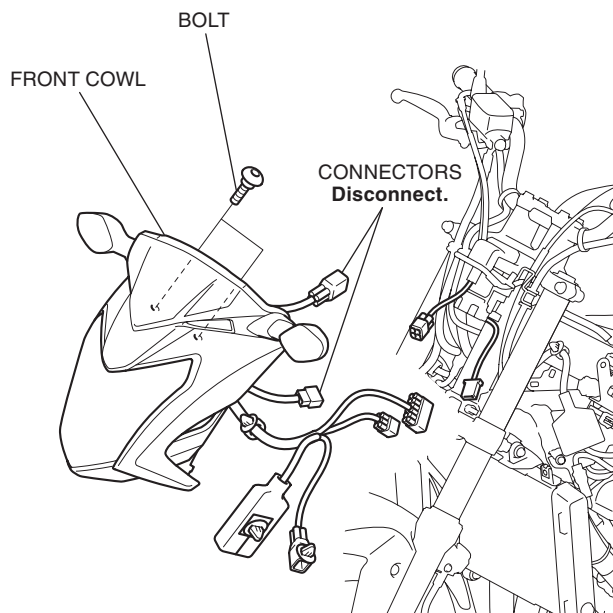
5. Refer to the Service Manual for the motorcycle, remove the motorcycle parts.
  - **Temporarily remove the clip stay and remove the clips as shown in the illustration, and then reinstall the clip stay on the original position.**



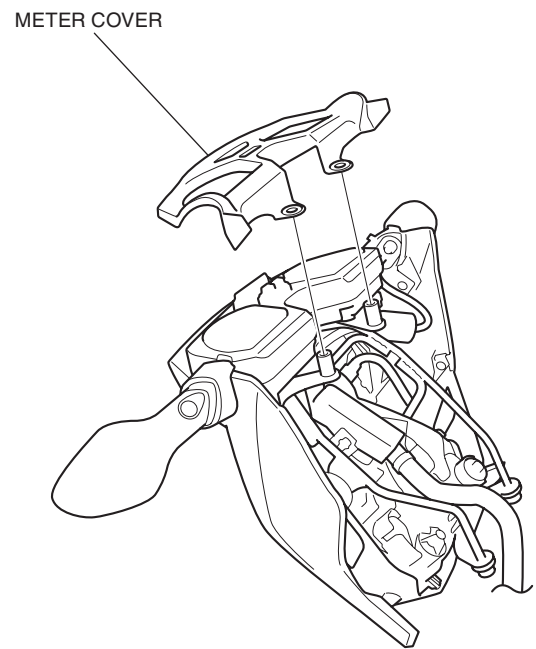
6. Refer to the Service Manual for the motorcycle, remove the motorcycle parts.



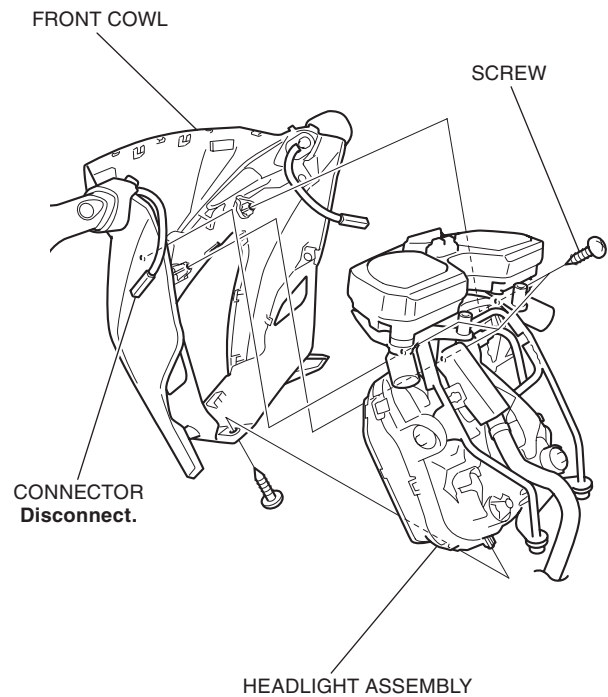
7. Refer to the Service Manual for the motorcycle, remove the motorcycle parts.



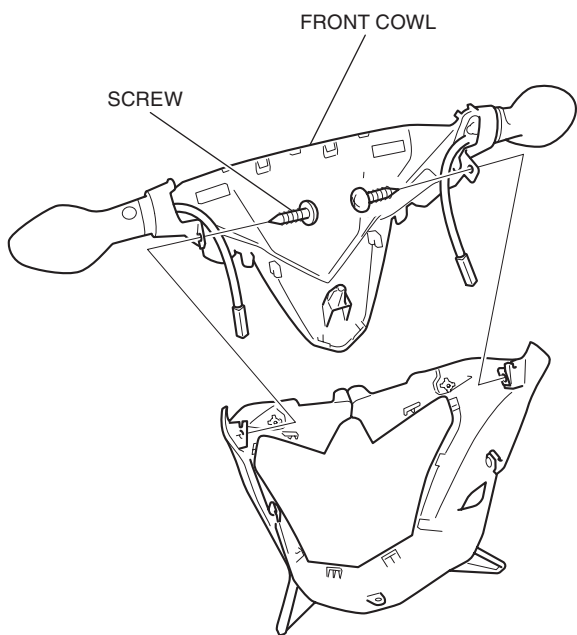
8. Refer to the Service Manual for the motorcycle, remove the motorcycle parts.



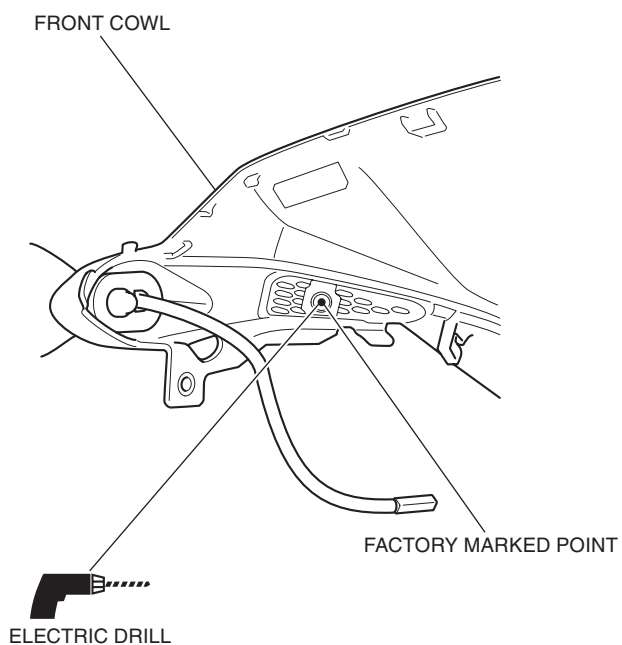
9. Refer to the Service Manual for the motorcycle, remove the motorcycle parts.



10. Refer to the Service Manual for the motorcycle, remove the motorcycle parts.

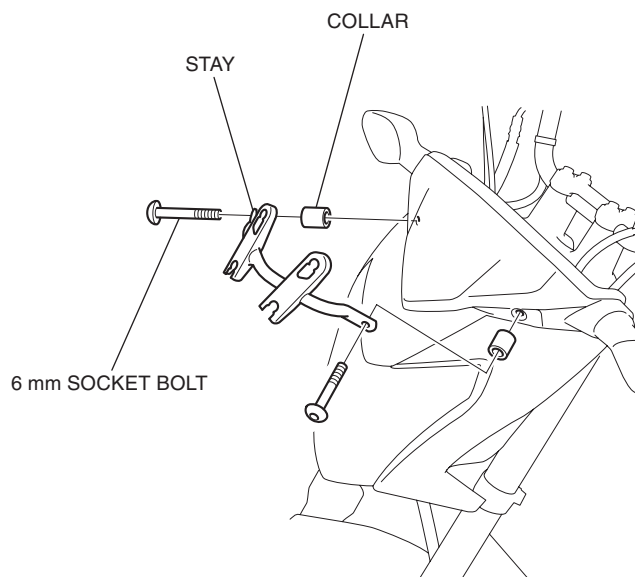


11. Drill a 12 mm hole the factory marked point on the reverse side of the front cowl using an electric drill.
- **First, drill a pilot hole of 5 mm.**
  - **Remove any burrs from the edge of the hole.**
  - **Repeat on the right side.**

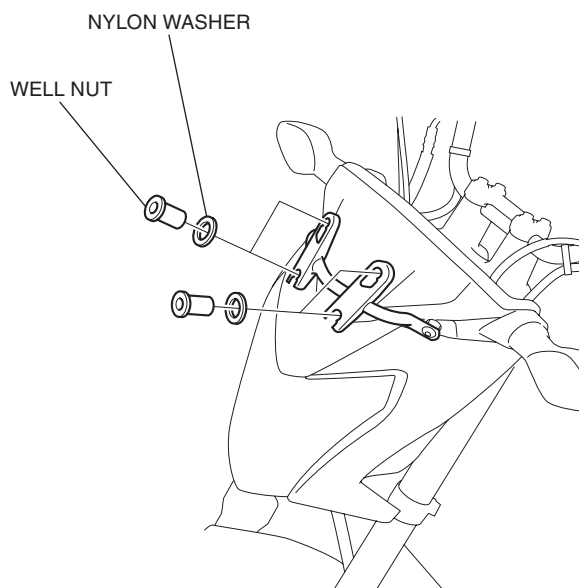


12. Install the front cowl in the reverse order of removal.
- **Confirm that the harness is not caught or too tight.**

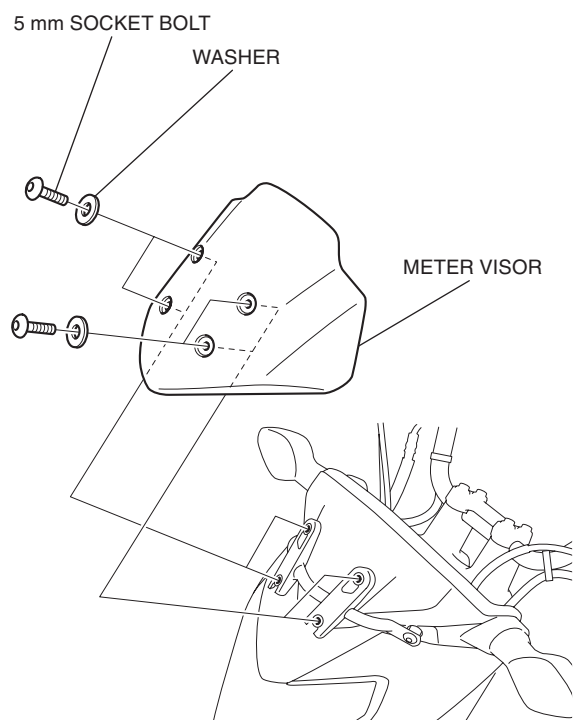
13. Install the stay as shown.



14. Install the nylon washers and well nuts as shown.



15. Install the meter visor as shown.



16. Move the handlebar right and left, and check that this accessory is not interfere with the motorcycle parts.